

The logo for EDP Vision, featuring the letters 'EDP' in a large, bold, red, sans-serif font. Below 'EDP', the word 'vision' is written in a smaller, red, lowercase, sans-serif font, with wide letter spacing. A thin white horizontal line is positioned below the word 'vision'.

# EDP vision

Empower Education  
Drive Development  
Unleash Potential





Empower Education

# Empower Education Through Purposeful Environments

Learning environments are perhaps the most important of spaces for conscious and purposeful design. There are a number of practical and positive outcomes that arise out of designing and making places intended for learning and teaching.

## Opportunity to Lead by Example

Employ best practice principles and demonstrate how our environment can help us learn and how itself continues to learn.

- implement perceptible green strategies
- innovate typologies
- collaborate and engage productively
- use resources wisely
- live your motto

When you hire an Architect, you're really hiring a group of skilled people. But 'skills' are often commoditised, so what you're actually investing in is 'people', and the way they see the world.



## Opportunity to Learn Everywhere

Create stimulating environments in the right places by carefully using:

- form
- colour and texture
- character spaces
- light
- air
- views

Purposeful spaces can create mindful new experiences, promote creativity and create opportunity to develop conceptual and critical thinking through interaction.



## Opportunity to Include Everyone

Designing inclusively, means designing for inclusion of the differently-abled. An empathetic approach to universal access ensures that each student has the same experience as his peer.

- design creatively for the differently-abled
- identify the needs of ALL end users.
- utilize collaborative design practices
- design safe and supportive spaces

Architects operate in an extremely collaborative environment, ensuring that design solutions are fit-for purpose, and invigorated with creative thinking and problem solving that only comes from working well together.



*"Design is not just what it looks like and feels like.  
Design is how it works"*

S. Jobs



SNAPP  
ARCHITECTS



National Research Foundation Auditorium, Tshwane



Drive  
Development

# Drive Development Through Innovation

Strategic development planning is a value - adding process. Thinking innovatively about what our learning environments can look like, feel like and work as a place - specific and organization - specific design solution is as important as an education that promotes creativity and mindful resilience. Growth is a natural process of expansion, but development is intrinsically positive and progressive.

## Benefit from an Innovative Environment

Building purposeful places, has a number of benefits:

- a safe and compliant environment
- an inclusive environment
- a sustainable environment
- lower operational costs
- a unique fit for purpose solution
- a design solution that gives back what you need it to.

A good professional team will be mindful of what you want to get out of the project and show you how to get there.



## Create Safe Spaces

We learn better when we are in safe and supportive environments. In addition buildings manage the flow of air, light, heat, cold and moisture. Designed incorrectly they can cause more harm than good. This can be avoided by:

- designing for Climate
- prioritizing natural sources of heat and light
- designing for psychological comfort

Your Architect and the rest of the professional team are not just designing an aesthetic and static object, but a living microcosm suitable to it's user's needs. Good places need to be fit-for-purpose and fit-for-feeling.



## Plan for Positive Growth

Plan for progressive development by:

- integrating technology
- re-inventing redundant types
- adopting a viable phasing strategy
- benchmarking a green strategy

An Architect looks at the bigger picture and sees where the best potential for positive development lies now and in the future.



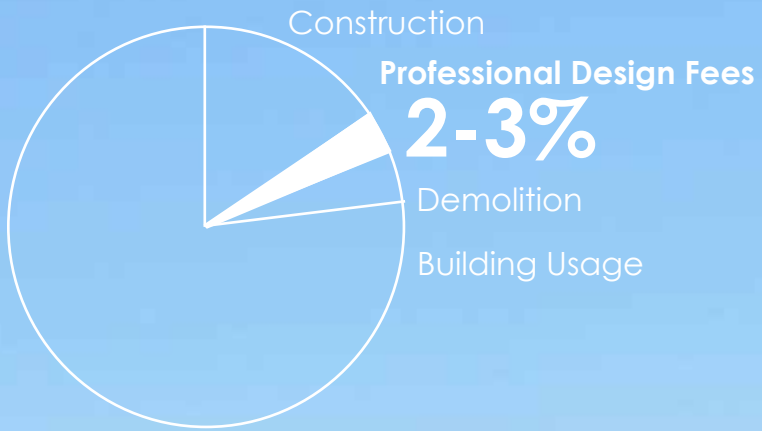
*"Innovation is change that unlocks new value"*

H. Nofter



SNAPP  
ARCHITECTS





Value in Perspective

Mnankala Technical High School, North West



SNAPP  
ARCHITECTS



Unleash  
Potential

# Unleash Potential Through Collaborative Planning

Investing in growth of your Institution is a major decision, and obtaining funding may be a daunting thought. That is why effective planning that considers the long term and value adding mechanisms are worth the initial investment. Choosing the right professional can have an influence on what your project, looks like, feels like and ultimately works, but over and beyond that, choosing the right professional can determine your experience for the entire process.

## Visualise Latent Potential

Whether it is just an idea or in construction, architectural marketing material can help you in the following ways.

- attract investors with a vision portfolio
- present multimedia of what the future could look like
- exhibit you growth to your Industry
- master plan to change growth into strategic development

Most people respond to visual material. Share and present your ideas through a visual experience, to communicate what the future will "look like, feel like and how it will work." S. Jobs



## Do Your Homework

Without a solid foundation, you'll have trouble creating anything of value."  
E. Oppenheimer

Whether it is just an idea or in construction, know the challenges and opportunities which lie ahead and avoid:

- growth with no value
- unsustainable operational costs
- limited use
- incorrect site selection
- unforeseen costs

Most people are not aware that Architects offer special professional services at the idea stage.



## Know the Basics Which Need to Comply

Each project has unique legal requirements. Examples are indicated below, however educational environments have a number of particular regulations which need to be complied with

- SANS10400 The Application of the National Building Regulations
- SANS10400: XA Energy Efficiency
- The Occupational Health and Safety Act
- Local Town Planning Schemes
- Local By-Laws

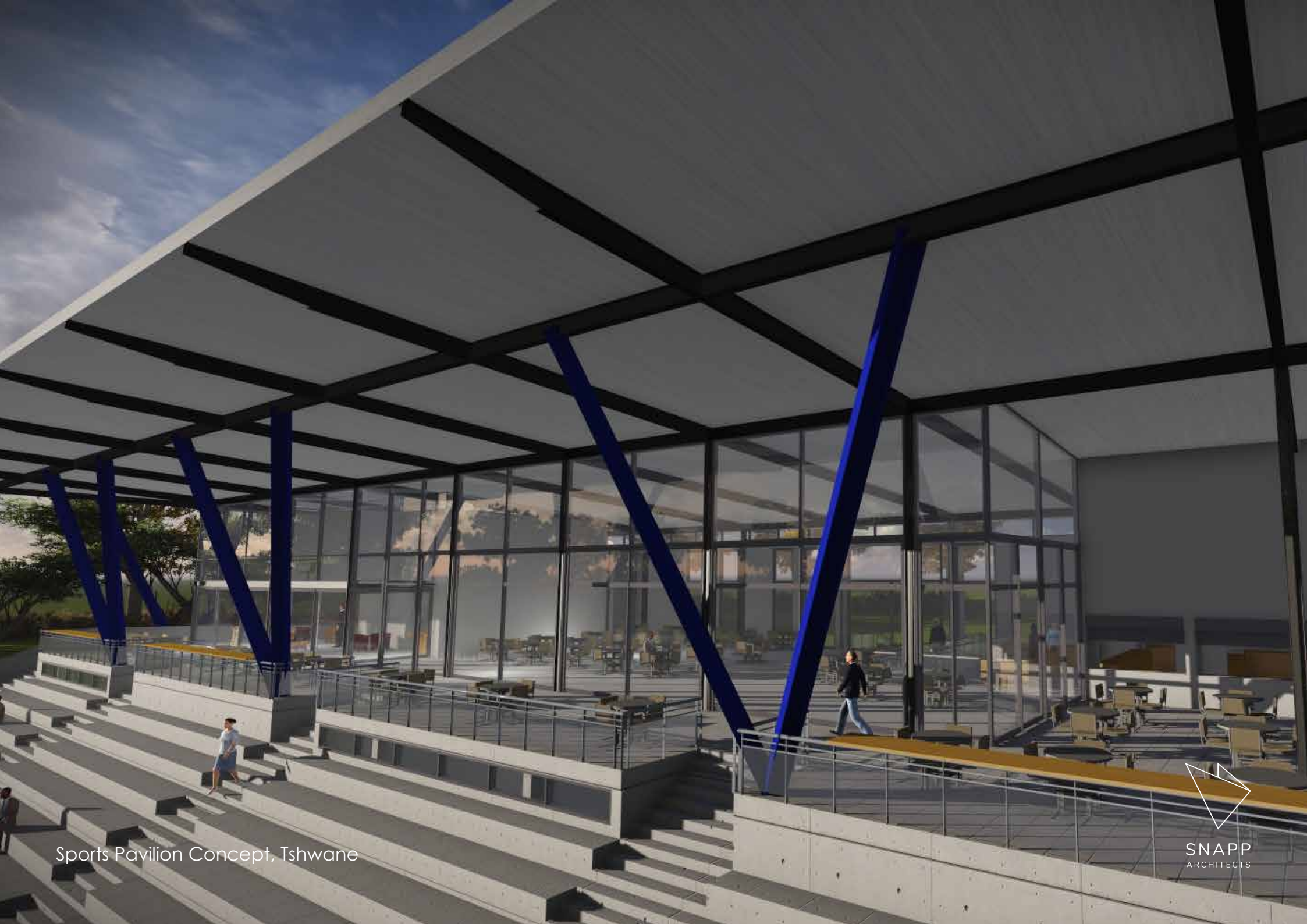
Your Architect will ensure that all designs and specifications comply to the relevant legislation.



*"The best way to predict the future, is to create it"*

A. Lincoln





Sports Pavilion Concept, Tshwane





## Why US

We'll build for purpose

Every job is a team job

We'll make it as easy as possible

We provide the full standard legislated steps  
from ideation through to occupation

We'll do more than you ask

**We'll build your legacy**

Follow us on our multi-media platforms to see how  
we have done this for others.

[www.snapp.org.za](http://www.snapp.org.za)



## Let's Meet

Request a consultation and tell us about your project

### EMAIL :

[info@snapp.org.za](mailto:info@snapp.org.za)

### GAUTENG:

+27 (0)12 665 0937

P.O. Box 66212,  
Highveld, 0169

76 Centurion Drive East,  
Centurion Golf Estate,  
Centurion, South Africa

### WESTERN CAPE:

+27 (0)21 202 6056

P.O. Box 51338,  
Waterfront, 8002

11th Floor Touchstone House,  
7 Bree Street,  
Cape Town, South Africa

# EDP

v i s i o n

Empower Education  
Drive Development  
Unleash Potential



SNAPP  
ARCHITECTS